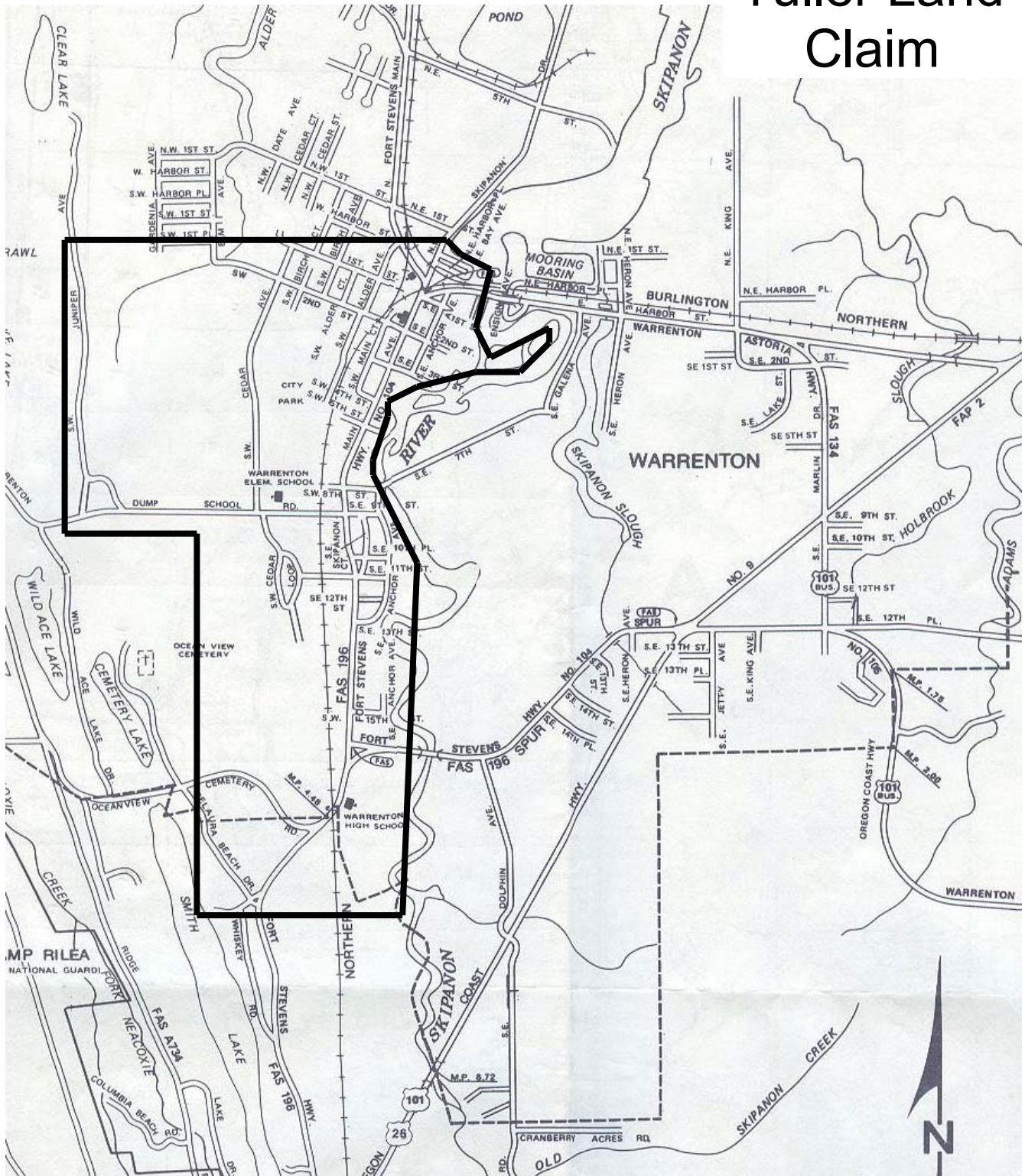


# Tuller Land Claim



Jeremiah G. Tuller established his land claim, in 1845. The original claim was larger than that shown above. The survey establishing this border was by the Surveyor General's Office in Eugene City, October 31<sup>st</sup>, 1863. The succession of land ownership was:

1. Jeremiah G. Tuller, a bachelor, in 1845.
2. Jeremiah and Miriam A. Tuller (Widow of Arthur H. Thompson), approximately 1851.
3. Frelingheysen and Jessie M. Stilson (daughter of Miriam Thompson-Tuller) approx. 1872.
4. D. K. Warren and C.A. McGuire, approximately 1878